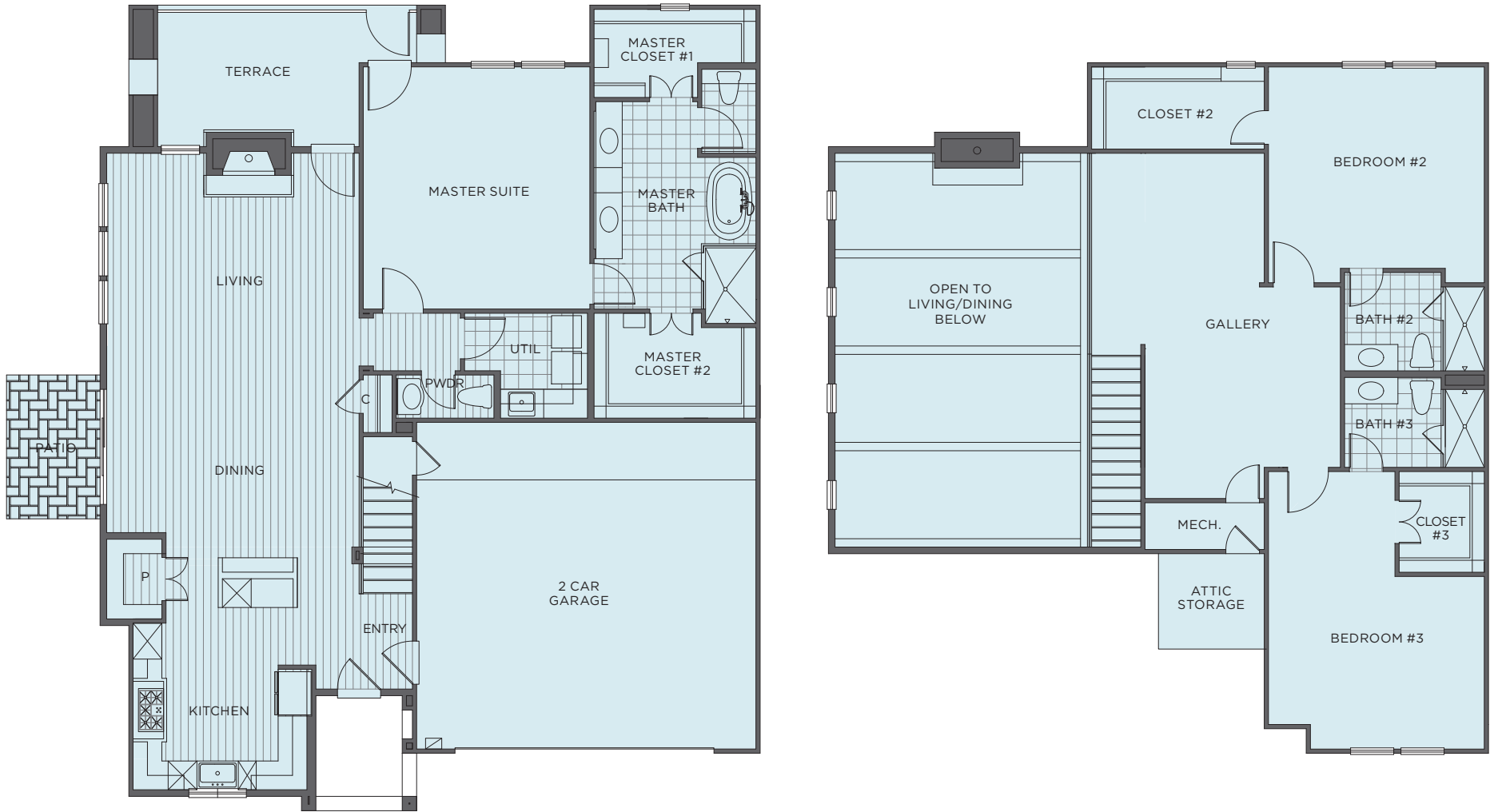


POSITANO

LAS COLINAS



POMPEII - F2 VILLA

3 BEDROOM | 3.5 BATH

LIVING 2,699 SQ FT | TERRACE 176 SQ FT | GARAGE 550 SQ FT

TOTAL SQUARE FOOTAGE

3,425



Floor plans shown are not to any particular scale and are subject to change. All dimensions are approximate and may vary from actual dimensions and from the description and definition of the "unit" as set forth in the purchase contract.

[POSITANOHOMES.COM](https://www.positanohomes.com)