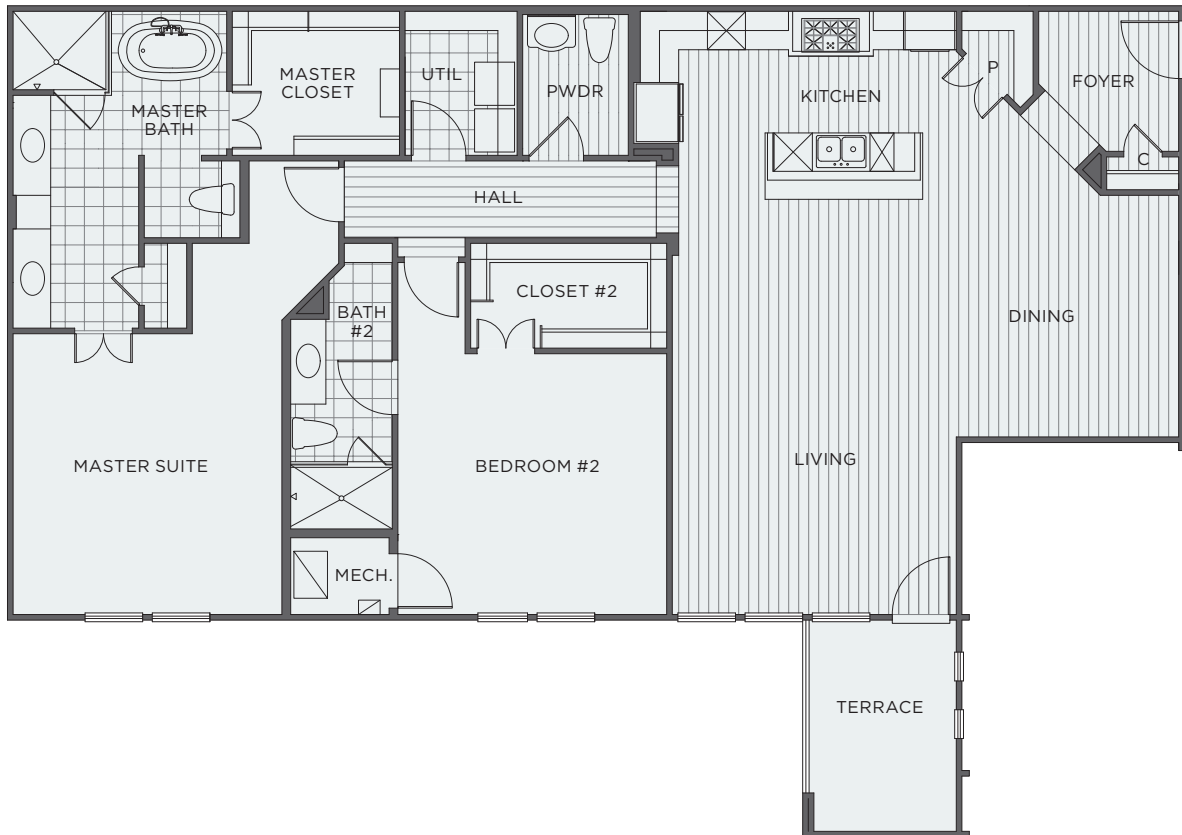


POSITANO

LAS COLINAS



CAPRI - A FLAT

2nd & 3rd FLOORS

2 BEDROOM | 2.5 BATH

LIVING 1,859 SQ FT | TERRACE 90 SQ FT

TOTAL SQUARE FOOTAGE

1,949



Floor plans shown are not to any particular scale and are subject to change. All dimensions are approximate and may vary from actual dimensions and from the description and definition of the "unit" as set forth in the purchase contract.

POSITANOHOMES.COM