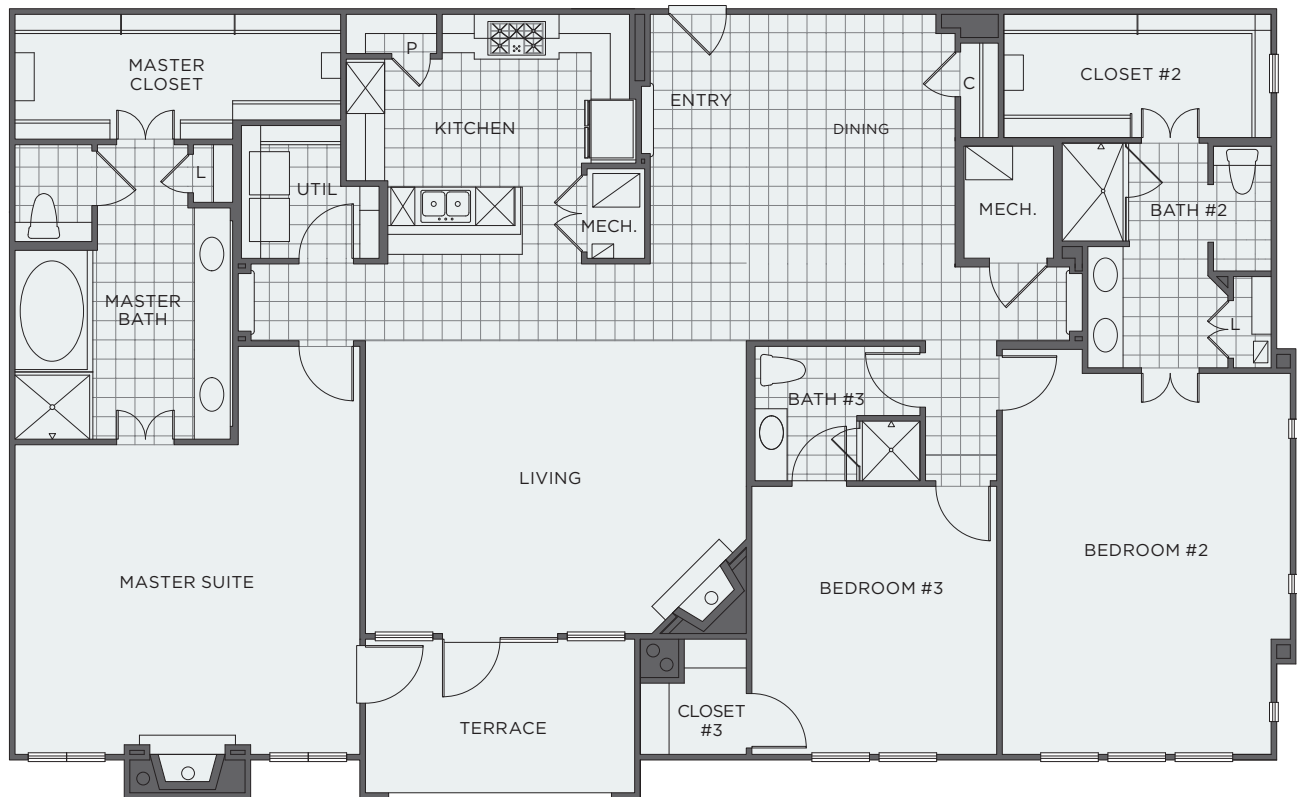


POSITANO

LAS COLINAS



PORTOFINO - E4 FLAT

1st & 2nd FLOORS

3 BEDROOM | 2.5 BATH

LIVING 2,397 SQ FT | TERRACE 112 SQ FT

TOTAL SQUARE FOOTAGE

2,509



Floor plans shown are not to any particular scale and are subject to change. All dimensions are approximate and may vary from actual dimensions and from the description and definition of the "unit" as set forth in the purchase contract.

POSITANOHOMES.COM