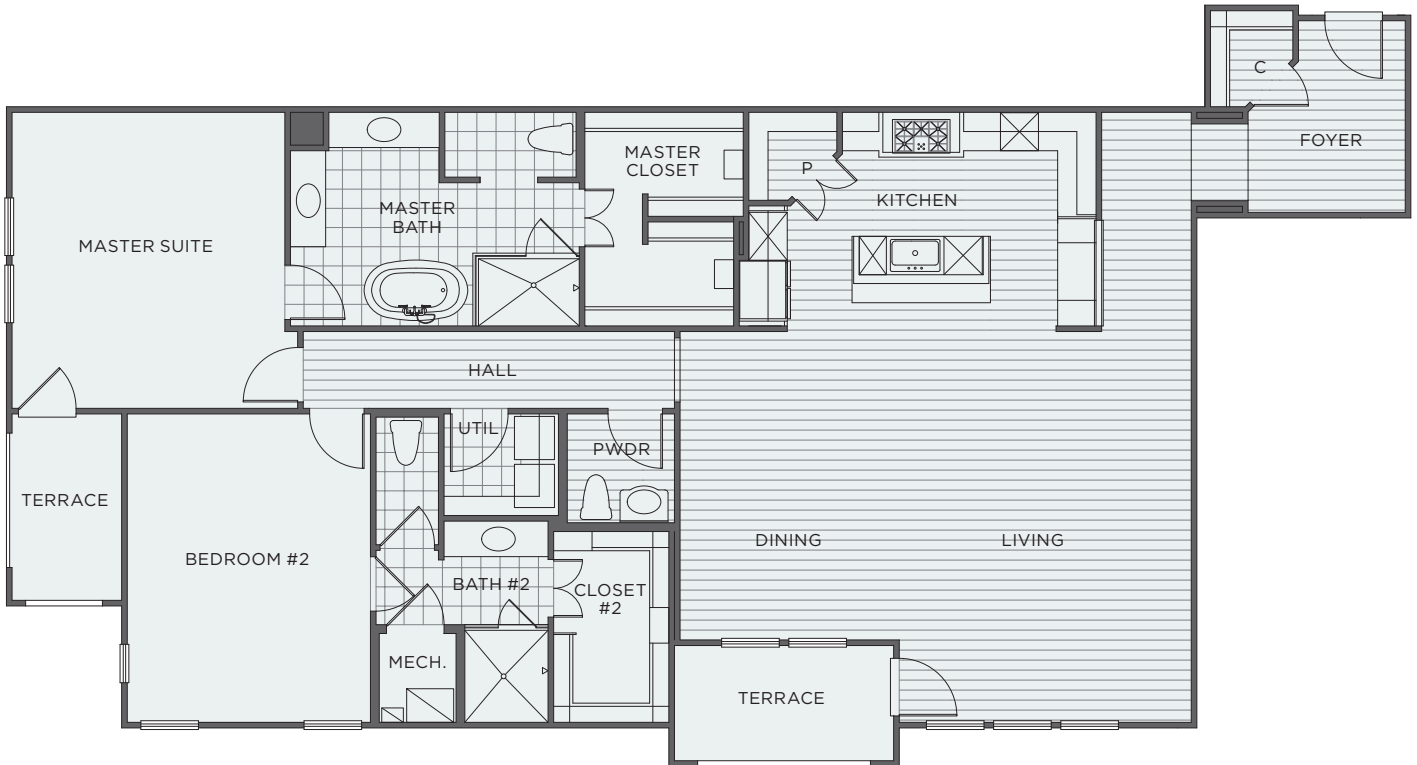


# POSITANO

LAS COLINAS



## SALERNO - B FLAT

1st FLOOR

2 BEDROOM | 2.5 BATH

LIVING 1,977 SQ FT | TERRACE 133 SQ FT

TOTAL SQUARE FOOTAGE

2,110



Floor plans shown are not to any particular scale and are subject to change. All dimensions are approximate and may vary from actual dimensions and from the description and definition of the "unit" as set forth in the purchase contract.

[POSITANOHOMES.COM](http://POSITANOHOMES.COM)